



designed & created by

2011

General Description and Pricing Orienteering Team Apparel

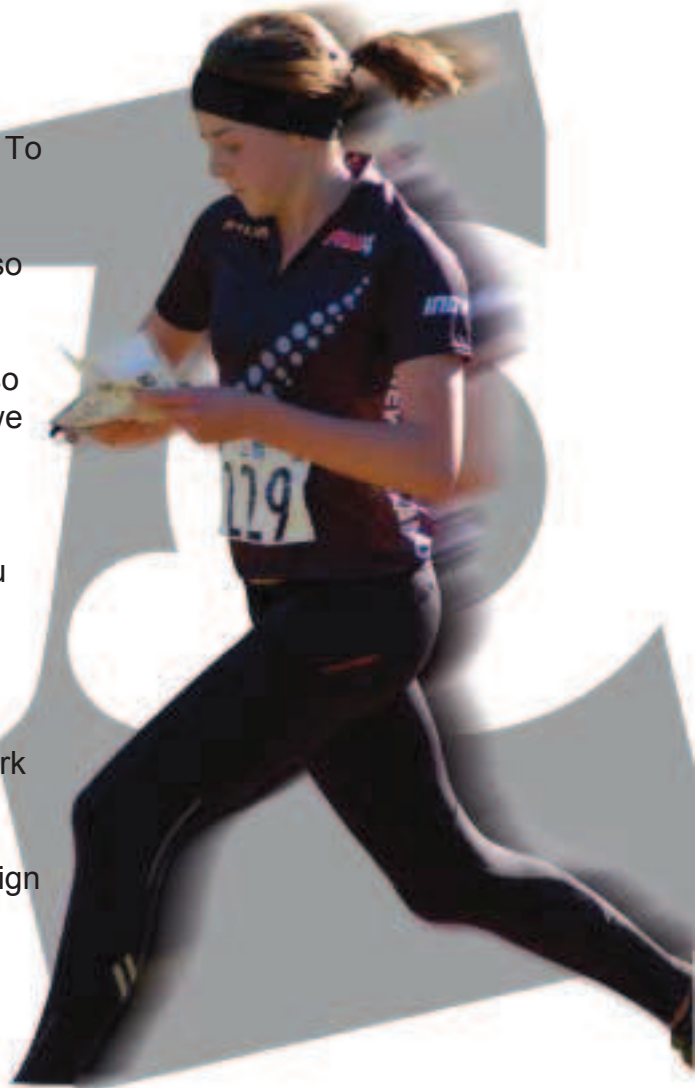
Our gear is designed to get dirty. We wrap a blend of sweat, mongrel determination and dauntless design into all of our products to match the demands and fearless style of those who wear the dirtyd label. Tested and punished all over the world... now it's your turn.

We've run around in orienteering and adventure running clothing for the past 3 decades and we've seen it all. So for the past 10 years we've been designing club and team uniform that balances a simple and practical fit with great design. Minimal seams, good fit, and

Working with us

We like to think we keep things pretty simple. To do this we follow 6 easy steps;

- 1 Contact us (you've already done this, so we're already on the way)
- 2 We send you some initial information so that you can get a basic idea of what we can do for you (this is on the following pages)
- 3 We build a simple design brief with you to create a guide for both of us. (there will be some technical details included in this part - the nuts and bolts)
- 4 We either design what you'd like or work in with your designer
- 5 Together we create an awesome design and make your orienteering gear
- 6 We deliver



In the following pages we've provided some general information to get you started. If you've got any questions that need some quick answers, don't hesitate to contact us. As orienteers we look forward to helping you design the gear that'll see you run the world.



swift™
elite fit

Men&Women
size: xs-xxl

swift-kids™
elite fit

Kids
size: 8 -14

These tops have a slim-cut that isn't as forgiving as the **ex Club Fit**. There is a men's/women's/kids cut for this style. This comes with a cycle style collar.

Description: Low cut cycle collar with zip to just above solar plexis. Raglan sleeves/front/back panels made from dri-cool polyester with Spandex dri-cool side panels allowing movement and moisture wicking on the sides below the arms.



swift-lite™
elite fit

Men&Women
size: xs-xxl

Utilising the unique pattern developed by dirtyd, his top is the ultimate combination of durability and comfort. With a combination of lightweight performance materials on the back, front and side panels, providing easy movement even in the harshest conditions.

Description: Low cut cycle collar with zip to just above solar plexis. Performance polyester on the front and sleeves for durability and coolness. Spandex dri-cool side panels and a dri-cool polyester back panel to allow movement and moisture wicking. More suited to hot conditions it also works in combination with a thermal under top in cooler more rugged conditions.



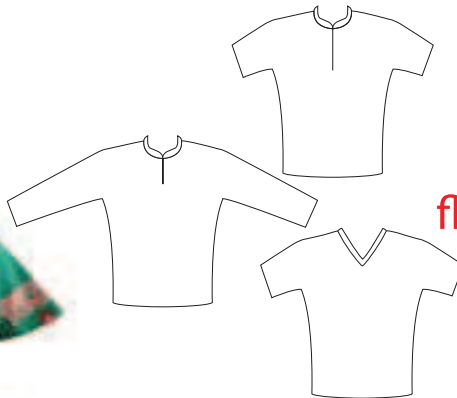
dart™
club fit

Men&Women
size: xs-xxl

Made from a spandex dri-cool with a mesh back, this super lightweight top is designed for hot conditions where protection isn't paramount. Ideal for sprint and park orienteering, it's quick drying properties are also ideal for training. It can be worn as either a loose or close fitting garment.

Description: Sleeveless running top with mens and womens cut. 83% Dri-Cool/17% Spandex side panels with polyester mesh back.





flexTM | Uni-sex
club fit | size: xs-xxl

flex-longSTM | Uni-sex
elite fit | size: xs-xxl

flex-VTM | Uni-sex
elite fit | size: xs-xxl

We offer both a **Cycle Collar (flex)** and **V-Neck (flex-V)** version of this style. There is also a long sleeve cycle collar version available (**flex-longS**) This pattern is more size forgiving than the **swift** and does not have the mesh side panels. As such it has the ability to make people of different shapes and sizes to look like the athletes they know they are. This single pattern is designed to suit both men and women.

Description: Choice of cycle style collar with zip or v-neck. Short or long sleeve with garment made from dri-cool polyester.



sabre-liteTM | Unisex
general fit 3/4 Opant | size: xs-xxl

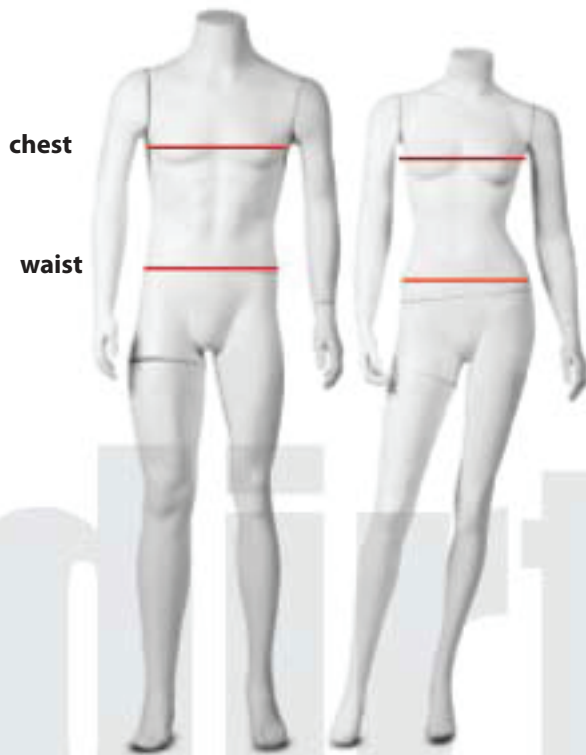
A simple style o-pant with a pattern that has stood the test of time for nearly 20 years. With minimal seams and an easy fit, the sabre-lite provides comfort and sleek lines without bunching and biting in all the wrong places. It has a simple external pocket that sits snugly at the base of your spine and additional slim fit hip pocket(s) for extra energy supplements. The spandex dri-cool back panels allow for an unrestricted range of movement and combines with the durability of performance polyester on the front panels. This unique combination allows sabre-lite to be worn as traditional orienteering pants, or as orienteering tights when a smaller size is worn.

Description: With performance polyester on the two front panels and spandex dri-cool on the two back panels, these lightweight pants also feature a rear lumbar pocket and side hugging hip pocket(s) design.



tops

The elite and club tops are different shapes and have completely different measurements. Make sure you check the right table. Be honest with yourself when you make the measurements. You're the one that has to be comfortable when you're out there running wild.



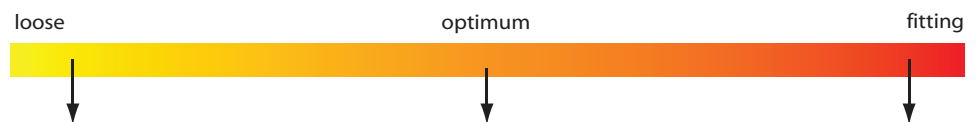
MEASURING

CHEST: Measure under arms around the fullest part of the bust. Be sure to keep tape level across back and comfortably loose. **MAKE SURE YOU TAKE THE CHEST MEASUREMENT WITH YOUR ARMS AT YOUR SIDES (as shown), NOT RAISED.**

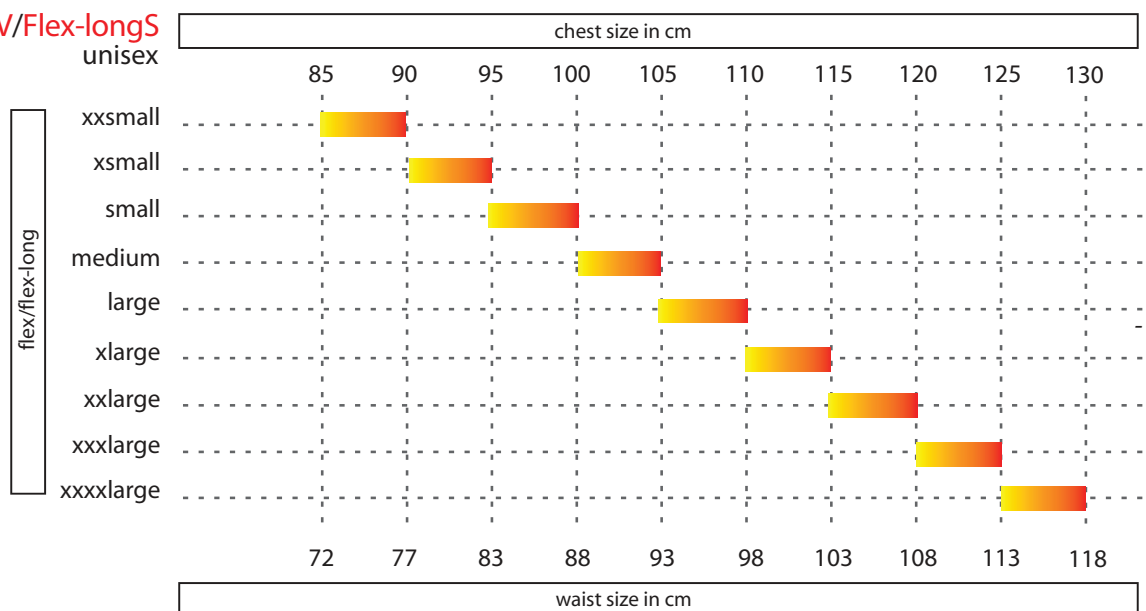
WAIST: Although technically the area shown is probably your hips, measure around this area with a loose tape.

HINT: If you find your measurements fall within the upper limits of a size range e.g. in the elite fit mens range you measure 115cm across the chest, we suggest that you carefully consider going up a size from L to an XL. This is especially relevant where there is an overlap of measurements between size ranges, especially if you prefer a loose fit to your clothing

BODY FIT

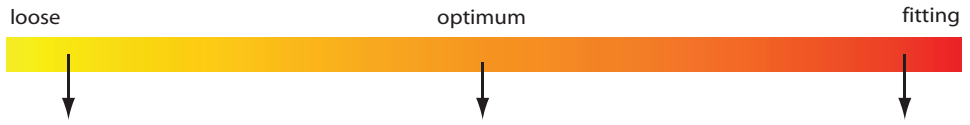


Flex/FlexV/Flex-longS

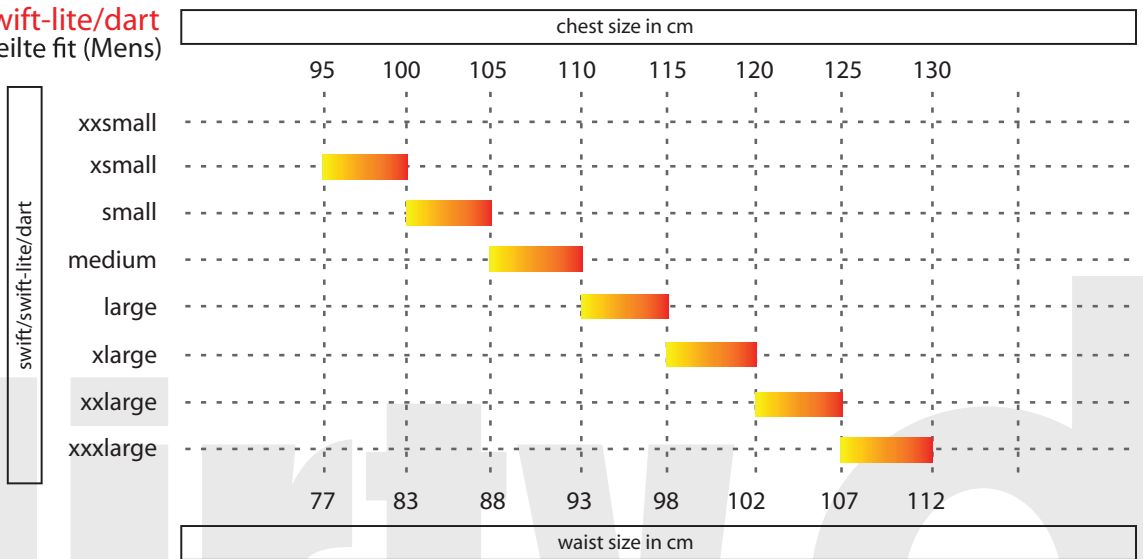


tops

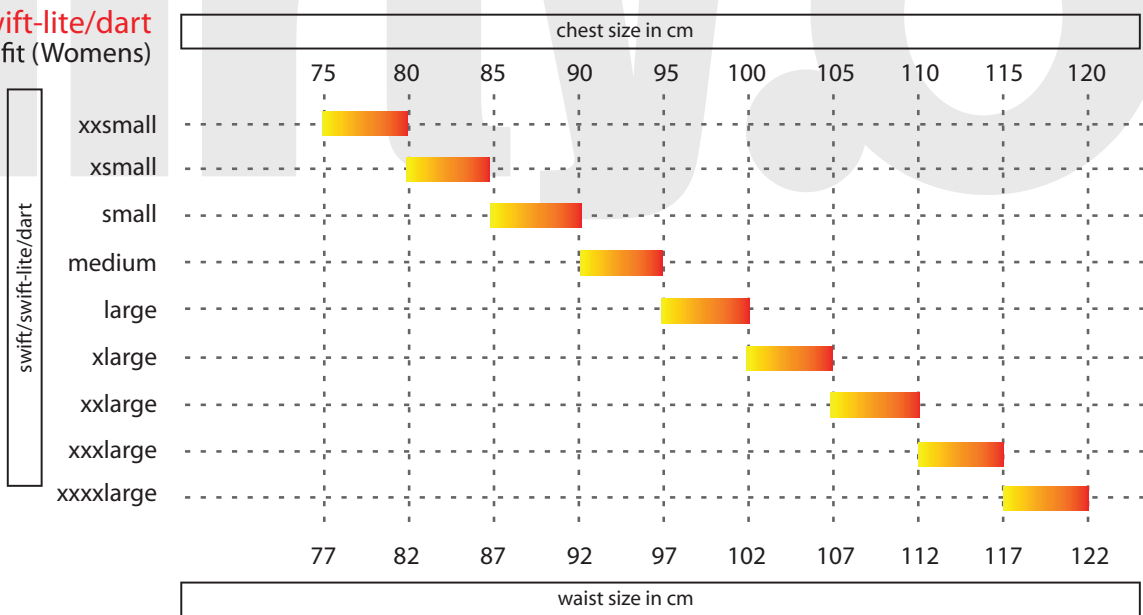
BODY FIT



Swift/Swift-lite/dart
eilte fit (Mens)



Swift/Swift-lite/dart
eilte fit (Womens)



Swift-kids
eilte fit

